



Welcome

CROUGHTON ALL SAINTS CE PRIMARY SCHOOL

Mrs Smith – Headteacher DSL Mrs Green – School Business Manager DDSL
 Mr Stapleton – Chair of Governors

Class	Teacher	Support Staff
Oak – EYFS UNIT Nursery & Reception	Ms Pepler - Mon-Thurs Mrs Harden - Friday	New
Chestnut – Year 1 & 2	Mrs Connor	Mrs Lewis Mrs Hankins - pm
Ash - Year 3	Miss Curtis	Mrs Wilmot Ms Denton (M) /Miss Wilson
Sycamore - Year 4	Ms Hassan	Mrs Stapleton
Maple - Year 5 & 6	Miss Davis	Mrs Dean

Mr Smith – Site Supervisor
 Mr Nixon – S4A staff PE lessons and lunch
 Mrs Freeman, Mrs Hankins, Ms Denton – Lunch Supervisors

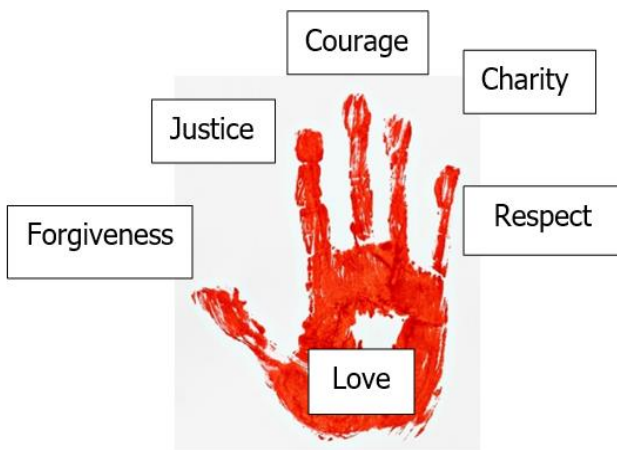
Vision & Values

At Croughton All Saints CE Primary School we believe that every child is a unique individual with great potential.

Our drive for excellence and wanting to be the best that we can be, stems from our vision and inspires and motivates us to continuously improve standards and learning opportunities for all.

Be Ready, Be Respectful, Be Safe – To believe, achieve, succeed together!

This is firmly rooted in Christian values. We look to Jesus as our guiding light. He inspires us to live out our Christian values and strive for excellence in all we do; celebrating life in all its fullness. Jesus said 'I have come that you may have life in all its fullness' (John 10:10). He calls us to a full life in mind, body, heart and spirit.



Be



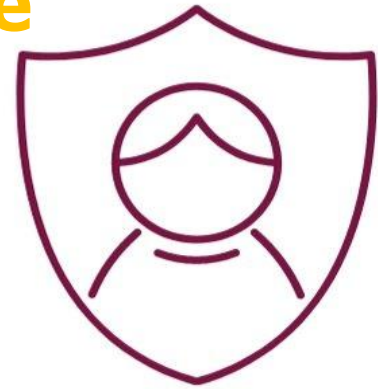
Ready

Be



Respectful

Be



Safe



To Believe, Achieve, Succeed Together

Rules, Rewards & Houses

Each class makes a set of rules. School rules are all encompassed in our 'Be ready be respectful be safe' mantra. Also, we follow a set of Christian values to live by and follow in school.

Children can earn gems for the jar when they demonstrate our values around school.

Gems are collected in class and then a whole school jar is filled. Once filled (approx. every half term) the whole school earns a reward!

Should children make a poor behaviour choice then we have a 5-step procedure we all follow in school.

Children are all placed into a 'House'

AIR

EARTH

FIRE

WATER

Children earn house points for work. Children gain badges when they reach milestones.

Scores for houses are shared weekly in Friday assembly.

Children may work in these groups for varying other activities.

Daily Act of Worship

As a Church school we have a daily act of collective worship of a wholly Christian nature. This may be as a whole school, phase, or a single class.

A collective worship plan is drawn up each term and we follow the church calendar as well as our Christian values and themes.

- Head teacher leads Monday,
- Praise and worship on a Tuesday.
- Class assemblies/worship are on a Wednesday
- Staff or visitor led worship is on a Thursday.
- We have a weekly VIP, celebration assembly on a Friday morning which parents are welcome to attend from 9am.

We do visit the local church too for services throughout the year.

Children in Nursery will, to begin with have Collective Worship in class apart from on Fridays.



Ofsted

Our most recent Ofsted inspection took place in May 2023

The school has continued with its rating of Good.

So many wonderful positives were highlighted within the report and their visit.

There are very high expectations of pupils' behaviour. Pupils behave well in lessons and around school. They enjoy strong relationships with their teachers and other adults. Pupils say that they feel safe in the school. They trust that their teachers will help them if they are worried about anything. Leaders and teachers actively support pupils' well-being.

We are not complacent however and wish to strive to improve still as much as we can.

Our Ofsted report in full can be found on the website.





SEN

*A child or young person has special educational needs if he or she has a learning difficulty or disability which calls for special educational provision to be made for him or her. A learning difficulty or disability is a significantly greater difficulty in learning than the majority of others of the same age. Special educational provision means educational or training provision that is **additional to, or different from**, that made generally for others of the same age in a mainstream setting in England.*

SEN Code of Practice, 2014

We have a thorough process by which we identify and support children with educational needs. Children have a Pupil Profile set up, which is reviewed termly. Teaching Assistants are deployed to support children with SEN working either 1:1 or in small groups, to best suit their needs. The school's SEN policy, which is in accordance with the County's policy and has regard to the Code of Practice on the identification and assessment of special education needs, is led by the Special Educational Needs Co-ordinator (SENCO) who co-ordinates the work of the teachers and teaching assistants.

The school's SENCo is Miss Hannah Curtis.

Uniform



We believe that a uniform is helpful in establishing good standards of appearance and behaviour in school and by wearing it children quickly feel part of the community. Further details can be found on the school website.

Nursery children are to wear a school uniform on the top half to help them feel a sense of belonging. They can wear their own clothes on the bottom half.

PTFA do have a second-hand uniform provision.

Medical



- ❑ Procedures for prescribed medicine.
- ❑ Procedures for non-prescribed medicine.
- ❑ Form in pack important completely accurate with medical condition/s.
- ❑ Medical bags in class – inhalers etc.
- ❑ Medical procedures for in the event of First Aid being administered - minor and serious.
- ❑ Change in medical conditions over the year/s.

If your child is sick, then please call in or use the Study Bugs app to let us know they can't attend.



Food & Drink

We encourage healthy eating habits. Sweets, fizzy drinks, chocolate etc are not permitted in school and items such as crisps should be given occasionally. Our website has some great healthy lunchbox ideas.

Children can drink milk or water in school. Milk can be ordered through the Cool Milk scheme. Each child is provided with a school drink bottle.

Children will have access to fruit each day in school.

If children are having lunch with us, then they need to bring a healthy packed lunch into school.

Communication



- A weekly newsletter and attachments – Friday
- All classes have school emails that parents are given access to.
- Staff are also available at the start and end of the school day.
- We hold welcome meetings and send out information each term about what the children will be learning as well as having parent's evenings and sending home annual reports.
- Termly book looks – open door – see work.
- We deliver curriculum workshops to support parents in what the children are learning.
- We have a parent forum which meets termly and has a representative from all classes.
- Find out on Facebook a little a bit about what we get up to!

Term dates

Term Dates 2023-2024

Autumn term 2023

Mon 4 Sept to Wed 20 Dec

Half term holiday: Mon 23 Oct to Fri 27 Oct

INSET DAYS:

Monday 4th September 2023

Tuesday 5th September 2023

Spring term 2024

Thursday 4 January to Thursday 28 March

Half term holiday: Mon 19 Feb to Fri 23 Feb

Bank holidays: Fri 29 Mar and Mon 1 April

INSET DAYS:

Thursday 4th January 2024

Friday 5th January 2024

Summer term 2024

Monday 15 April to Tuesday 23 July

Bank holiday: Monday 6 May

Half term holiday: Monday 27 May to Friday 31 May

Summer holiday: Wednesday 24 July to Friday 30 August

INSET DAY:

Monday 15th April 2024

PTFA



Friends of Croughton
All Saints CE Primary School

Welcome!

- Who we are and what we do
- Fundraising efforts
- Expenditure & what we've contributed towards
- How you can help



Friends of Croughton
All Saints CE Primary School

Friends of Croughton All Saints School PTA

PTFA Presentation



Friends of Croughton
All Saints CE Primary School

Who we are!

- A team of around 12 parents across the year groups;
- Facebook – Friends of Croughton Parents Page;
- Meet every couple of months;
- School budgets are ever more stretched;
- Dedicated to improving our 110 children's educational experience, through fun activities and experiences.

Fundraising

Our target is to raise around £5,000 for the school each year.

Examples of fundraising activities include:

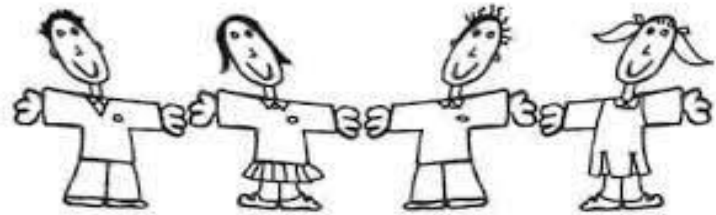
- Easy Fundraising www.easyfundraising.org.uk/panel
- Bags2School <https://bag2school.com/>
- Pancake Day
- Easter raffle
- Sponsored events
- Mothers and Fathers Day gift shops
- Frozen Fridays and Uniform Sales
- One off events, e.g. The 2022 Challenge
- Refreshments at school play and sports day
- Annual School Disco
- 100 Club – launching in September 2023
- The Croughton Christmas Fayre



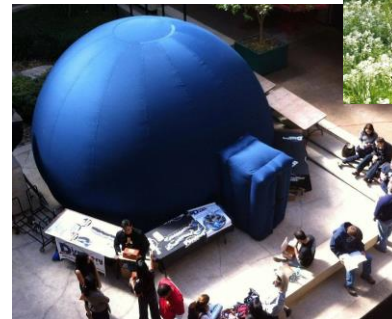
Friends of Croughton
All Saints CE Primary School

Expenditure

- £2,000 towards new school laptops
- £500 per class towards reference books and learning materials
- Annual subscription to Ed Shed
- £10 per child, per year towards a school trip
- Whole school trip to panto in Oxford
- Magician as a pre Christmas treat
- Trip to Evenley Wood Gardens
- Wellbeing and nurture resources
- Bibles for all of KS2
- Tableware for Coronation tea party
- Mobile Planetarium – September 2023



Friends of Croughton
All Saints CE Primary School



Croughton All Saints PTFA - Thank you for your support!!



Bee-Bot & Blue-Bot

Specifically designed for use by young children. This colorful & easy-to-operate little robot is a perfect tool for teaching sequencing, estimation, problem-solving, programming & control!



Diatonic Chime Bars
6 sets

Coach costs for
Oak class trip



Croughton All Saints
CofE Primary School

Jubilee pin
badges

Contribution to Leavers Party
and Bibles



Percussion Class Pack
4 sets



Weather Play Mat



Tools, gloves and money
towards gardening
activities



Weather Station and
Anemometer to measure
wind speed



30 optical mice for school
laptops

Book stands for all
classes

Artwork for leavers hoodies

How you can help!



Friends of Croughton
All Saints CE Primary School

- Join us!
- A couple of hours of your time!
- Carry out a sponsored activity
- One off donations
- Match fundraising efforts
- Donation of items for our events
- Sponsor one of our events
- Join Easy Fundraising - https://www.easyfundraising.org.uk/support-a-good-cause/step-1/?char=277387&invite=8mqrxg&referral-campaign=s2s&utm_campaign=refCROtest
- Join the 100 Club

OAK CLASS



NURSERY & RECEPTION
EYFS UNIT



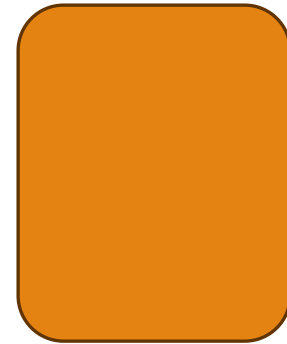
Oak class, EYFS Unit staff 23-24



Ms Pepler
Mon – Thurs



Mrs Harden
Friday



New Support Staff
Mon-Fri

Session Times

Morning	Lunch	Afternoon
<p data-bbox="181 476 716 572">Official Time 9-11.30 School time: 8.40-11.30am</p> <p data-bbox="137 648 765 858">Please note as we open the doors at 8.40 for the rest of the pupils, we will do the same for Nursery.</p>	<p data-bbox="832 476 1064 512">11.30-12.30</p>	<p data-bbox="1195 476 1731 572">Official time: 12.30-3pm School time 12.30 -3.15pm</p> <p data-bbox="1122 648 1808 858">Please note as we open the gates and doors at 3.15 for the rest of the pupils, we will do the same for Nursery.</p>

Children who arrive/leave at 11.30 or 12.30 need to ring a doorbell that will be on the gate outside the bike shed. The gate will then be unlocked for you to drop off or collect your child.

Early Years Foundation Stage 0-5 Curriculum

Learning and Development occurs within seven areas of learning



4 Specific Areas

- **Literacy**
(Comprehension, Word Reading, Writing)
- **Mathematics**
(Number, Numerical Patterns)
- **Understanding the World**
(Past and Present, People Culture and Communities, The Natural World)
- **Expressive Arts and Design**
(Creating with Materials, Being Imaginative and Expressive)

3 Prime Areas

- **Communication and Language**
(Listening, Attention and Understanding, Speaking)
- **Personal, Social and Emotional Development**
(Self-Regulation, Managing Self, Building Relationships)
- **Physical Development**
(Gross Motor skills, Fine Motor skills)

Learning occurs across all seven areas with the anticipated achievement of the Early Learning Goal in each area by children at the end of the Reception year.

Characteristics of Effective learning

Playing and Exploring

(finding out and exploring, playing with what they know, being willing to 'have a go')

Active Learning

(being involved and concentrating, keeping on trying, enjoying achieving what they set out to do)

Thinking Creatively and Critically

(having their own ideas, making links, working with ideas)



Seeing your child's achievements

There is no longer a requirement for Early Years practitioners to keep evidence of children's learning, however, as a school we feel it is important to share the most significant achievements and 'wow' moments with parents.

Each Nursery child will have a board space in the classroom where work will be collated to show off their work. This will be sent home termly.

For the learning which takes place through your child's play, we are introducing a new online journal – Seesaw.



Seesaw

The Learning Journal

Seesaw is an online journal where staff will document some of your child's achievements through photos, videos and short notes. You can view your child's journal on a mobile phone or computer using your own login.

Your child will also have a login. At school, we will teach the children how to take and upload photos of their work. We will have daily time slots where the children can share some of these achievements with the rest of the class.

Your child can then use this login at home to upload evidence. If parents wish to add observations, this can be also done through their child's login.

All uploads from a child's account will be need to be approved by a member of staff before appearing in their journal.



Typical Day - Term 1

- 8.40 - Welcome - children come into and select from the activities set up by the staff.
- 9.00 - Collective Worship
- 9.20 - Wake up – Shake up/brain break
- 9.25 - Whole class input
- 9.40 - Continuous provision*
- 10.35 - Environmental reset
- 10.45 - Phonics
- 11.10 – Fine motor skills
- 11.20 - Wash hands, sing, story, celebration of learning, preparation for lunch time
- 11.30 - 12.30 - lunch
- 12.30 - 12.40 - mindfulness time
- 12.40 - Whole class input
- 1.00 - Continuous provision*
- 2.30 - Environmental reset
- 2.45 - Circle time, shared story, celebration of learning
- 3.05 - Home time organisation begins

**Continuous Provision-children select their own learning from the resources available in our indoor and outdoor areas, plus small group work.*

What to bring to school:

Daily:

Bookbag

Coat

Packed lunch – if staying

Items to be left at school:

Wellies and puddlesuit

Spare clothes (in case of toilet accidents)





Thank you

CROUGHTON ALL SAINTS CE PRIMARY SCHOOL